

JUNIPER
NETWORKS

DEFINING YOUR NBN SERVICE OFFERINGS

Tim Nagy
17 April 2013

AGENDA

- 1 Overview of NBN Connectivity
- 2 Choosing Your Subscriber Termination Type
- 3 Automating Subscriber Connections
- 4 Sample BNG Builds Compatible with NBN
- 5 Advanced Topics: CoS, Billing Integration
- 6 Summary

2 Copyright © 2013 Juniper Networks, Inc. www.juniper.net

JUNIPER
NETWORKS

AGENDA

- 1 Overview of NBN Connectivity
- 2 Choosing Your Subscriber Termination Type
- 3 Automating Subscriber Connections
- 4 Sample BNG Builds Compatible with NBN
- 5 Advanced Topics: CoS, Billing Integration
- 6 Summary

3 Copyright © 2013 Juniper Networks, Inc. www.juniper.net

JUNIPER
NETWORKS


THE NATIONAL BROADBAND NETWORK

Over 34,500 active connections as of January 2013

>10,000 of those are active fibre connections

Network roll-out map can be found at:
<http://www.nbnco.com.au/rollout/rollout-map.html>

54,000 projected active fibre connections, >91,000 active total connections by June 2013



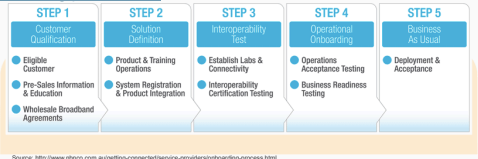
4 Copyright © 2013 Juniper Networks, Inc. www.juniper.net JUNIPER NETWORKS

ESTABLISHING NBN CONNECTIVITY

Service Providers ("Access Seekers") connect in one or more Points of Interconnect (121 POIs in total)

Onboarding process includes connectivity and product testing at an NBN facility

More details at:
<http://www.nbnco.com.au/getting-connected/service-providers/onboarding-process.html>



Source: <http://www.nbnco.com.au/getting-connected/service-providers/onboarding-process.html>

5 Copyright © 2013 Juniper Networks, Inc. www.juniper.net JUNIPER NETWORKS

NBN WHOLESALE PROVIDERS

Another option is to get connected via a wholesale provider

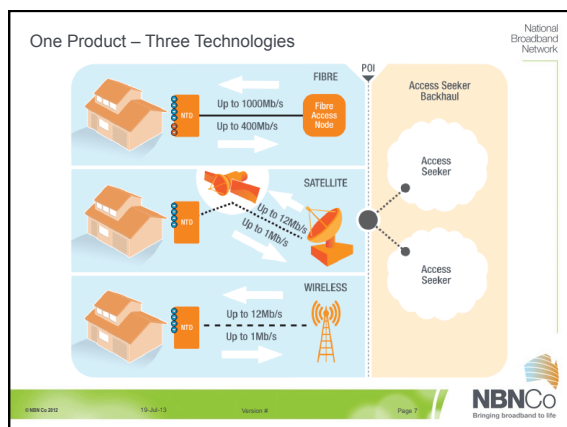
- Options range from layer 2 aggregation of all POIs to a white-label retail service

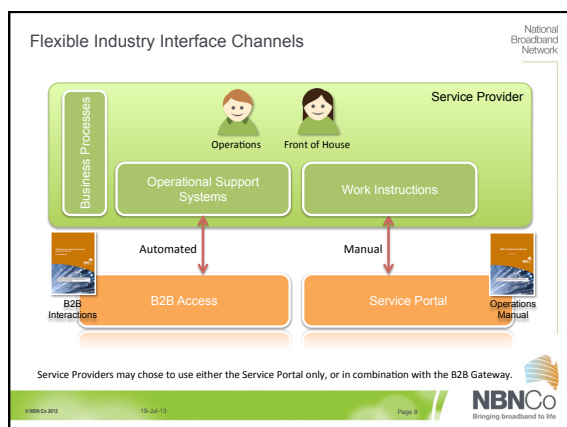
Full list of wholesale providers here:
<http://www.nbnco.com.au/getting-connected/service-providers/wholesale-service-providers.html>

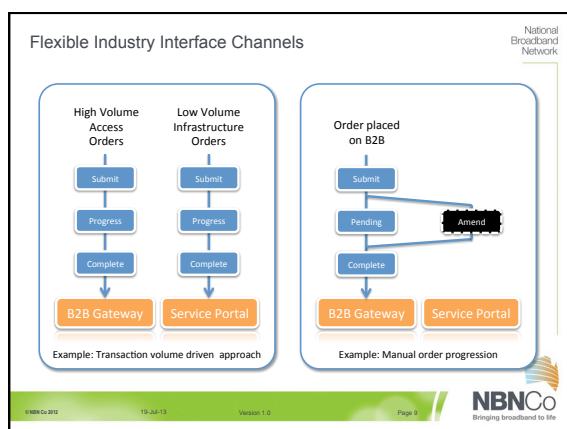
Service provider	Phone	Website
ADPT		www.adpt.com.au
Amcom	1800 428 428	www.amcom.com.au
Aurora Energy	1800 650 779	
Clear Networks	1300 855 215	www.clearnetworks.com.au
Etihad	1300 4 87TEL	www.etihad.com/wholesale.cfm
iscONE	1300 863 400	www.isc-one.com.au
Nextgen Networks	1300 653 351	www.nextgennetworks.com.au
Optus		www.optus.com.au/wholesale
TPPE Networks	13 PUPP (13 7473)	www.tppe.com.au
Platform Networks	02 9191 9000	www.platformnetworks.net
Symbio	1300 363 909	www.symbionetworks.com
Telstra Wholesale		www.telstrawholesale.com.au

Source: <http://www.nbnco.com.au/getting-connected/service-providers/wholesale-service-providers.html>

6 Copyright © 2013 Juniper Networks, Inc. www.juniper.net JUNIPER NETWORKS







AGENDA

- 1 Overview of NBN Connectivity
- 2 Choosing Your Subscriber Termination Type
- 3 Automating Subscriber Connections
- 4 Sample BNG Builds Compatible with NBN
- 5 Advanced Topics: CoS, Billing Integration
- 6 Summary

10 Copyright © 2013 Juniper Networks, Inc. www.juniper.net JUNIPER NETWORKS

SUBSCRIBER TERMINATION: PPPOE, DHCP, AND L2TP

Three primary mechanisms are available for subscriber termination:

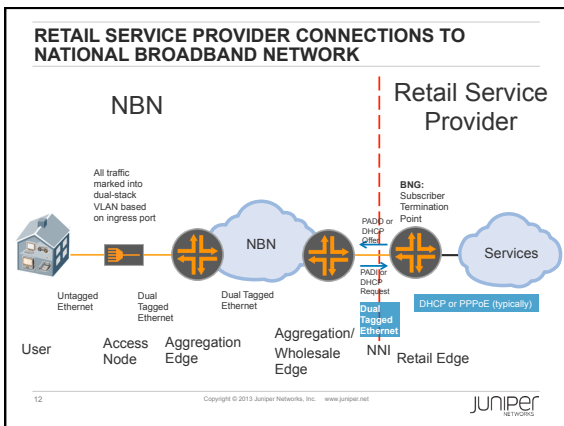
- PPPoE: Point-to-Point Protocol over Ethernet
- DHCP: Dynamic Host Configuration Protocol
- L2TP: Layer 2 Transport Protocol, used for transporting PPP frames over an IP network

Generally speaking, L2TP and PPPoE are viewed as legacy protocols

- Primary disadvantages of PPP are:
 - Overhead added to each frame (8 bytes)
 - No multicast support

All options are supported on MX-Series in combination or separately

11 Copyright © 2013 Juniper Networks, Inc. www.juniper.net JUNIPER NETWORKS

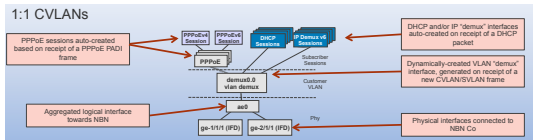


LOGICAL VIEW OF SUBSCRIBER SESSIONS

NBN Co uses the "1:1 CVLAN" model, where every subscriber has a unique CVLAN/SVLAN combination per POI

- Separate broadcast domain per subscriber

Higher-layer PPPoE/DHCP connections layered on top of the Customer VLAN interface



AGENDA

- 1 Overview of NBN Connectivity
- 2 Choosing Your Subscriber Termination Type
- 3 Automating Subscriber Connections
- 4 Sample BNG Builds Compatible with NBN
- 5 Advanced Topics: CoS, Billing Integration
- 6 Summary

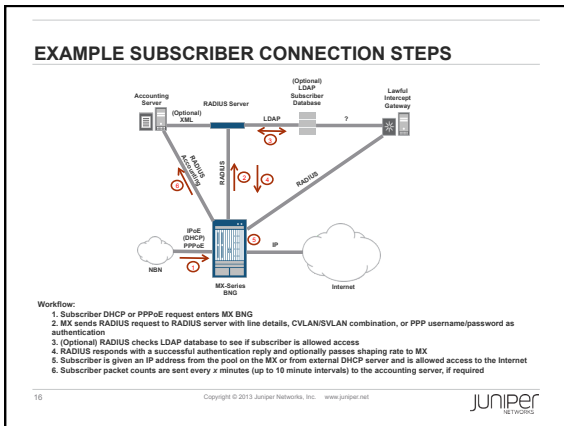
STATIC CONFIGURATION DOESN'T WORK IN 2013

With a fully automated B2B interface and a standardised NNI, there is a compelling argument to fully automate the addition of subscribers to your network

Juniper's principles for NBN automation are:

- Maintain identical config on all routers – zero touch for subscriber adds/deletions/changes
- Automatically sense and create subscriber connections at the router level
- Store customer information in a separate, off-router database

The end result being a lower cost to operate and maintain the network



AGENDA

- 1 Overview of NBN Connectivity
- 2 Choosing Your Subscriber Termination Type
- 3 Automating Subscriber Connections
- 4 Sample BNG Builds Compatible with NBN
- 5 Advanced Topics: CoS, Billing Integration
- 6 Summary

17 Copyright © 2013 Juniper Networks, Inc. www.juniper.net JUNIPER NETWORKS

BROADBAND NETWORK GATEWAY HARDWARE OPTIONS – JUNIPER MX-SERIES

MX 3D Family
Same Trio Chipset, Same Services
Extending Scale, Reach & Access

20Gbps 40Gbps 60Gbps 80Gbps 960Gbps 2.88 Tbps 5.3 Tbps 40 Tbps 80 Tbps

MX 5 MX 10 MX 40 MX 80 MX 240 MX 480 MX 960 MX-2010 MX-2020

18 Copyright © 2013 Juniper Networks, Inc. www.juniper.net JUNIPER NETWORKS

TWO OPTIONS FOR NBN BROADBAND NETWORK GATEWAYS

<p>Mid Scale: MX5</p> <p>Scaling:</p> <ul style="list-style-type: none"> ▪ 16,000 PPPoE or DHCP subs ▪ 4,000 L2TP subs ▪ 20-80 Gbps throughput <p>Can start at MX5 (20 Gbps) and upgrade with license keys to MX80 (80 Gbps)</p>	<p>Large Scale: MX960</p> <p>Scaling:</p> <ul style="list-style-type: none"> ▪ 128,000 PPPoE or DHCP subs ▪ 32,000 L2TP subs ▪ 5.3 Tbps throughput <p>MX240/480/960 are virtually identical in price, so buy the largest chassis that you can fit in your rack</p>
--	--

19 Copyright © 2013 Juniper Networks, Inc. www.juniper.net JUNIPER NETWORKS

SAMPLE MID-SCALE BUILD OF MATERIALS

Part Name	Part Description
MX5-T-AC	MX5 AC chassis with timing support - includes dual power supplies, MIC-3D-20GE-SFP, Junos, S-MX80-ADV-R, S-MX80-Q & S-ACCT-JFLOW-IN-5G licenses.
S-MX80-SA-FP	Subscriber Management Feature Pack License on MX80 Series
S-SA-4K	Subscriber Access Feature Pack License Scaling Limit to 4K Subscribers, MX and M Series

Notes:

1. Purchase additional S-SA-### licenses to grow subscribers
2. Optics are separate – uses SFP optics
3. Can grow to 80 Gbps with purchase of MX5->MX10, etc., licenses

20 Copyright © 2013 Juniper Networks, Inc. www.juniper.net JUNIPER NETWORKS

SAMPLE LARGE-SCALE BUILD OF MATERIALS

Part Name	Part Description
MX960BASE3-AC	MX960 Base Bundle, AC power
JUNOS-WW-64	Junos 64-bit Internet Software Worldwide Version
RE-S-1800X2-8G-UPG-BB	Routing Engine, Dual Core 1800Ghz with 8G Memory
PWR-MX960-4100-AC-BB	MX960 4100W AC Power Entry Module, Base Bundle
SCBE-MX-BB	MX-series Enhanced Switch Control Board, Base Bundle
MX-MPC2-3D-EQ-R-B	MX-MPC2-3D-EQ line card bundle, price includes full scale L3, L2 and L2.5 features
S-SA-FP	Subscriber access feature pack license for MX240, MX480, MX960
S-SA-4K	Subscriber Access Feature Pack License Scaling Limit to 4K Subscribers, MX and M Series

21 Copyright © 2013 Juniper Networks, Inc. www.juniper.net JUNIPER NETWORKS

OPTIONAL ADD-ONS TO THE BUILD

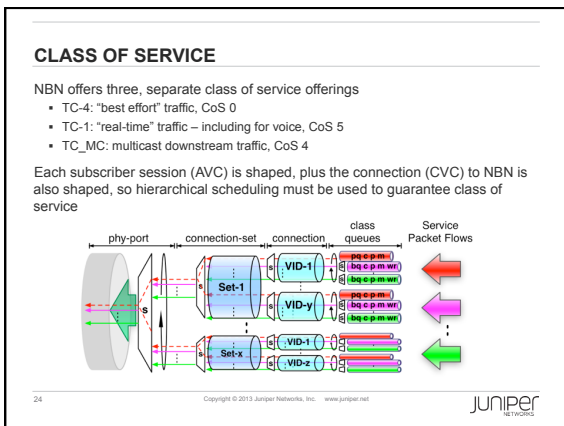
Part Name	Part Description
(MX240/480/960 Only) S-SSM-FP	Subscriber Service Management Feature Packet License (RADIUS/SRC Based Service Activation and Deactivation) Per-Service Accounting Features for Subscribers, MX and M Series
(MX5-80 only) S-MX80-SSM-FP	Subscriber Service Management Feature Packet License (RADIUS/SRC Based Service Activation and Deactivation) Per-Service Accounting Features for Subscribers, MX80 Series
S-SSP-FP	Subscriber Traffic Lawful Intercept Feature Pack License, MX and M Series
S-LNS-IN	Software License for LNS

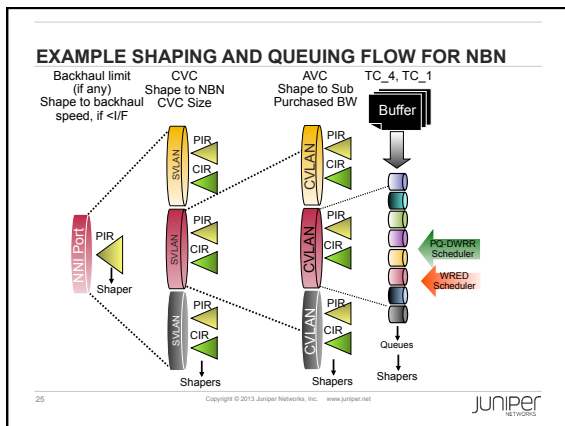
22 Copyright © 2013 Juniper Networks, Inc. www.juniper.net JUNIPER NETWORKS

AGENDA

- 1 Overview of NBN Connectivity
- 2 Choosing Your Subscriber Termination Type
- 3 Automating Subscriber Connections
- 4 Sample BNG Builds Compatible with NBN
- 5 Advanced Topics: CoS, Billing Integration
- 6 Summary

23 Copyright © 2013 Juniper Networks, Inc. www.juniper.net JUNIPER NETWORKS





CLASS OF SERVICE – ROUTER-GENERATED PACKETS

TC-4 and TC-1 services require that all packets entering the service be marked with 802.1p bits 0 or 5, respectively

Note: sample configurations have the "rewrite-rules" command under "host-outbound-traffic" to ensure that router-generated packets, such as DHCP and PPPoE packets, are correctly marked

Without this command, router-generated packets are by default marked using CoS 6 or 7

Copyright © 2013 Juniper Networks, Inc. www.juniper.net

USAGE-BASED BILLING SYSTEM INTEGRATION

Two options are available for usage-based billing:

- J-Flow (Netflow) with inline statistics being generated on the ASIC
- RADIUS accounting – accounting records sent every few minutes to the RADIUS or accounting server showing byte counts for each interface

While either option is feasible, J-Flow for billing tends to put a heavy load on the servers that process the records. It's not unusual to take more than an hour to process and sort an hour's worth of traffic, making this solution unusable.

RADIUS accounting requires little processing, however, and is generated per user by default. Virtually all billing systems can natively handle RADIUS accounting records and tie these to the username.

Copyright © 2013 Juniper Networks, Inc. www.juniper.net

LAWFUL INTERCEPT

Two approaches are available for lawful intercept:

- RADIUS signaling of intercept targets
- DTCP – an XML interface over SSH to the router that signals intercepts

Either method is feasible with both resulting in the same ASIC-based, wire-speed output of intercepted traffic to a monitor port.

In both cases, intercepted users are not visible in the CLI on the MX-Series.

28 Copyright © 2013 Juniper Networks, Inc. www.juniper.net JUNIPER NETWORKS

AGENDA

- 1 Overview of NBN Connectivity
- 2 Choosing Your Subscriber Termination Type
- 3 Automating Subscriber Connections
- 4 Sample BNG Builds Compatible with NBN
- 5 Advanced Topics: CoS, Billing Integration
- 6 Summary

29 Copyright © 2013 Juniper Networks, Inc. www.juniper.net JUNIPER NETWORKS

NOW IS THE TIME TO CONSIDER NBN CONNECTIVITY

With over 10,000 fibre users already and over 50,000 forecast by mid-2013, now is the time to connect to NBN

NBN has taken care of the access network for you – and this is traditionally the most difficult part of subscriber networks – so all that is required is an NNI and a Broadband Network Gateway

With a modest investment, you can start offering services on NBN almost immediately

30 Copyright © 2013 Juniper Networks, Inc. www.juniper.net JUNIPER NETWORKS

ADDITIONAL RESOURCES FOR NBN DEPLOYMENTS

Juniper
Day One Guide for Subscriber Management – an 88-page guide detailing how subscriber management works on MX-Series:
<http://www.juniper.net/us/en/community/junos/training-certification/day-one/networking-technologies-series/dynamic-subscriber-management/>

NBN
Product specifications for fibre access and UNI-V:
<http://www.nbnco.com.au/industry/service-providers/agreements/wba.html>

31 Copyright © 2013 Juniper Networks, Inc. www.juniper.net JUNIPER NETWORKS



everywhere



Engaging ICT for tomorrow

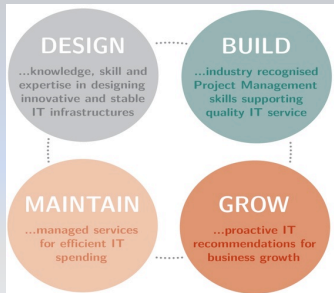
Vizstone Pty Ltd

- Established in 2009
- Servicing over 60 clients in the corporate, education, government, ISP and non-profit sectors
- Expertise in servers, storage, network
- Over 90% of Vizstone's customers have Juniper within their network
- iSelect Partner of Juniper
 - 5 certified Juniper Engineers and growing



References





DESIGN
...knowledge, skill and expertise in designing innovative and stable IT infrastructures

BUILD
...industry recognised Project Management skills supporting quality IT service

MAINTAIN
...managed services for efficient IT spending

GROW
...proactive IT recommendations for business growth

